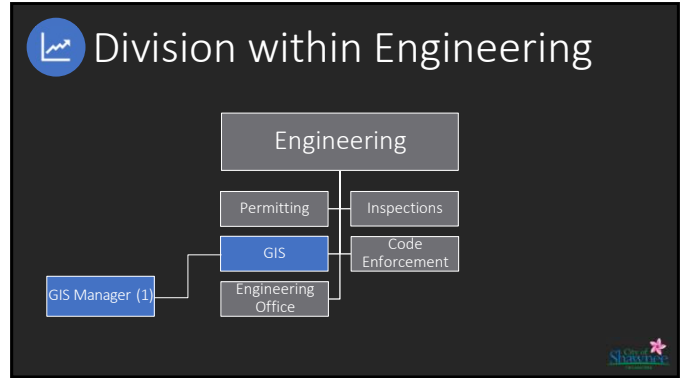




GIS - Responding to Growth

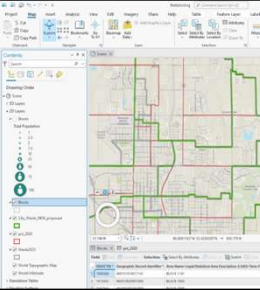
Zach Davis, GIS Manager

What is GIS?

- GIS - Geographic Information Systems
- Computerized mapping system that creates, collects, stores, analyzes, and visually displays spatial data – online & on paper

“Digitally mapping the physical world”



GIS Basic Spatial Elements

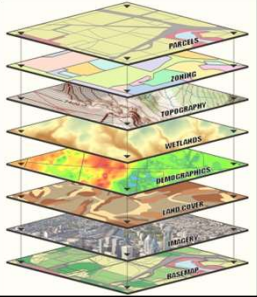
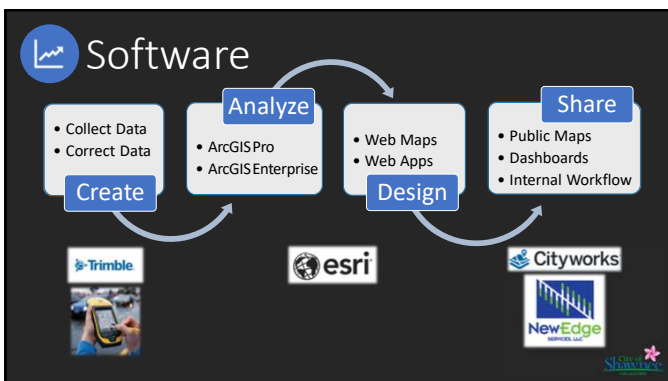
POINTS: Individual x, y locations.
ex: Center point of plot locations, tower locations, sampling locations.

LINES: Composed of many (at least 2) vertices, or points, that are connected.
ex: Roads and streams.

POLYGONS: 3 or more vertices that are connected and closed.
ex: Building boundaries and lakes.



Data Type

Data Layers

CityWorks & NewEdge

- CityWorks
 - Condition Assessment & Reporting
 - Service Request & Maintenance Scheduling
 - Work Order Management
 - Regulatory Compliance
- NewEdge
 - Integration across Divisions & Software Platforms

What We Map

- Infrastructure Inventory
- Planning & Development
- Floodplain Management
- Permits/Inspections
- Code Enforcement Cases
- Emergency Management
- Emergency Services
- Sanitation Services
- ... and much more

What We Map (cont.)

- 911 Address Mapping
- ALL residences & businesses inside City limits
- Collaboration with Permitting/Inspections to ensure valid & compliant addresses
- Ensuring 911 GIS Data is compliant with future NG-911 Oklahoma Standard

What We Map (cont.)

- Capital Improvement Plan (CIP) Dashboard
- Displays locations of FY 2024-2028 CIP Projects

How to Access

General Maps

Municipal

- City Limits
- City Works Search
- City Zoning

Infrastructure

- City Roads
- City Snow Routes
- City Utilities

Government Services Community How Do I

COMMUNITY LINKS

CITY MEETING CALENDAR

EVENTS

HISTORY OF SHAWNEE

NEWS AND PAPER RELEASES

WEATHERS PAGE

Mapping

Thank you! Questions?

GIS Division